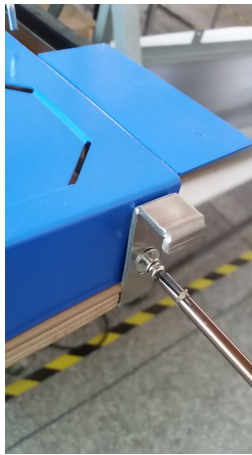


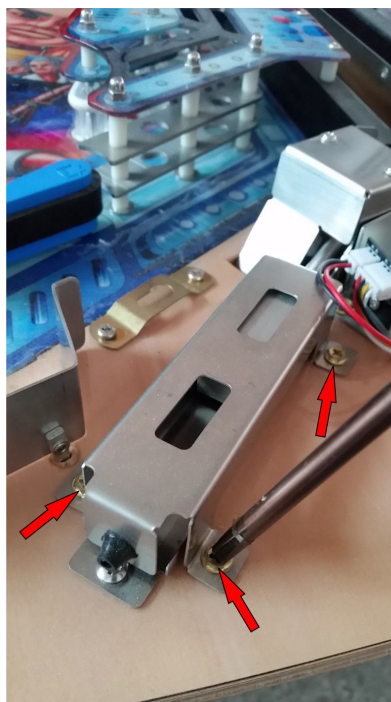


## **TAG Trough Upgrade (replace front metal frame)**

- (1) Remove balls from the trough (unlike me when I took these pictures)**
- (2) Remove the two screws holding the apron and take off the apron.**

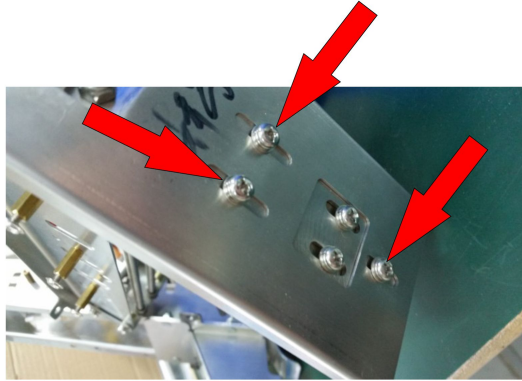


- (3) Remove the four screws holding the “ball trap” mechanism cover in place and remove the cover and the railway train inside (the base can stay in place).**

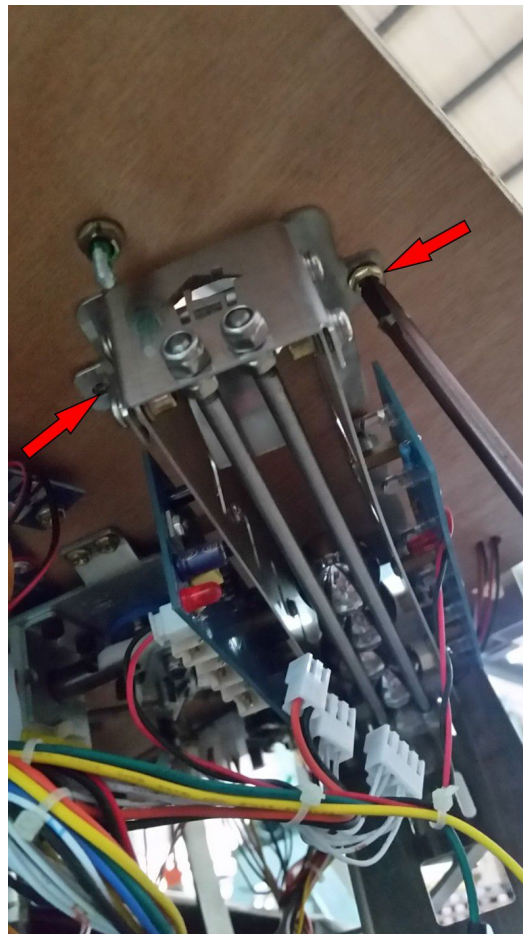


**(4) remove the three screws that secure the coil and its frame to the main trough mechanism and carefully allow the coil to hang by the wires.**

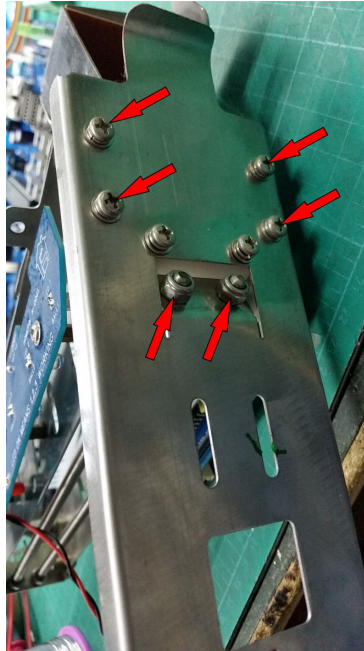
**Unplug the three connectors from the trough PCB.**



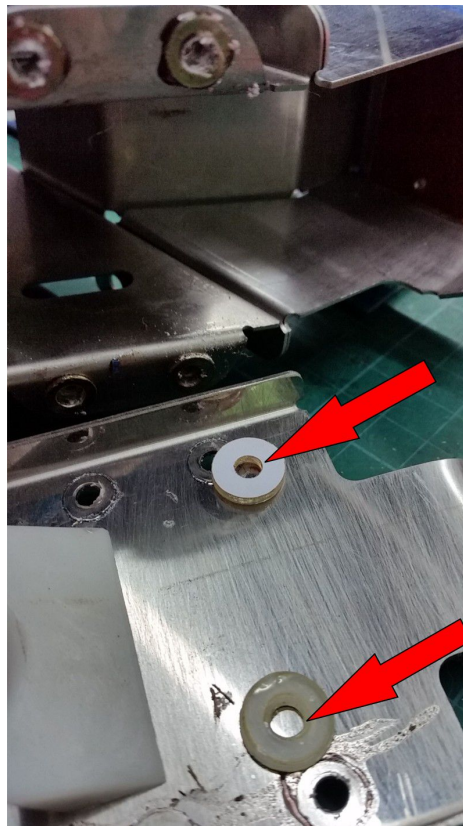
**(5) Remove the four screws holding the trough mech into the playfield and it will be easy to remove it.**



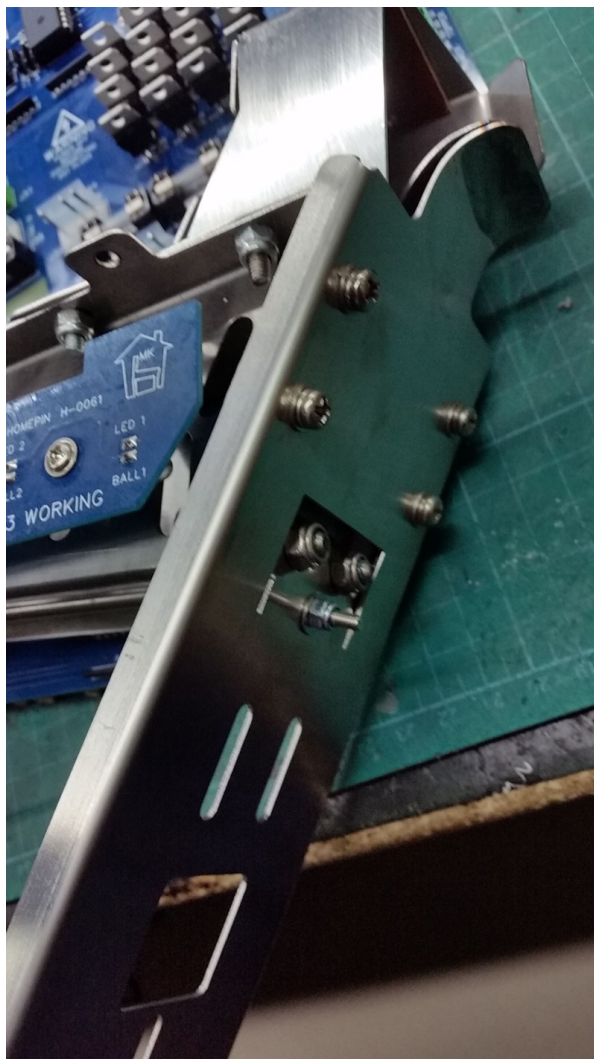
**6) Once on the bench, remove the two locknuts and four screws that secure the plate to the front of the mechanism.**



**(7) remove the front plate and if your mech has two x 2mm plastic spacer washers fitted with the top two screws, discard these (no longer required) as well as the old front plate.**



**(8) Fit the replacement front plate with the four screws and two locknuts and re-fit the mech to the playfield.**



Download this instruction sheet in colour at:  
[www.homepin.com/kits/TAG\\_Trough\\_Upgrade.pdf](http://www.homepin.com/kits/TAG_Trough_Upgrade.pdf)

© **Homepin Ltd (HK)**

--ooOOoo--